

MAXIFY TRUCK BED RAISER KIT

Owner's Manual



OVERVIEW

Thank you for purchasing a Truck Bed Raiser Kit. We value you as a customer and we hope that your installation goes smoothly. Please read the instructions thoroughly and follow each step in order. If you would rather watch a video to help with installation, you can scan the QR code above with your phone. Most of the parts in this kit have the part numbers on the part to help installation.

TOOLS NEEDED

- Drill or Impact Driver
- 9/16 Socket, Ratchet, and Wrench
- 3/8 Wrench
- 18mm Wrench
- 12mm Wrench
- Soapy Water
- Scissors

STEP 1

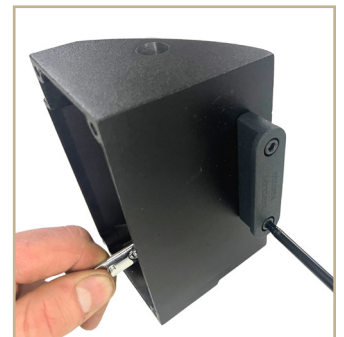
Start by removing your existing bed cover off of your truck bed, and set it off to the side for the installation.

STEP 2

Unbox your M10108 End Cap Kit, and grab the following parts:

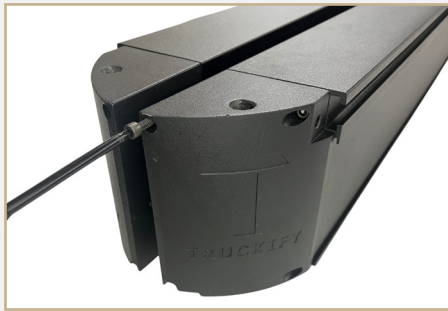
- **(2)** M00016 T Rail parts
- **(1)** M00012
- **(1)** M00013
- **(4)** #10-24 Bolts 1-1/4" Long (*Shortest Bolts in the Kit*)
- **(4)** Washers
- **(4)** Locknuts, and the regular end allen driver bit (*Save this bit for future use for other Truckify accessories*).

Assemble the M00016 T Rails on each end cap as shown in the picture. It does not matter which way they go on. Use washers only on the inside of the end cap. Tighten so that its snug.



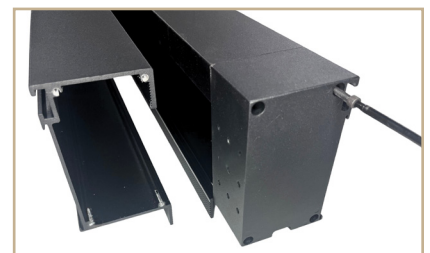
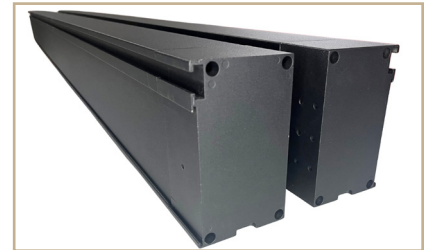
STEP 3

Grab the (2) Side Members out of your kit, and lay them upright on a flat table. From your package of bolts, grab all of the #10 Self Drilling Bolts 2-1/2" Long (These are the longest screws in your kit). When screwing these self drilling screws to bolt on the end caps, make sure you are only using a standard drill, DO NOT use an impact driver, because the self drilling bolts easily snap when tightened past snug. Using a standard drill and the driver bit, screw the M00012 and M00013 end caps to the aluminum and lightly tighten them. You can set the sidemembers on your truck to easily see which side is which. The M00012 goes on the drivers side, and the M00013 goes on the passenger side.



STEP 4

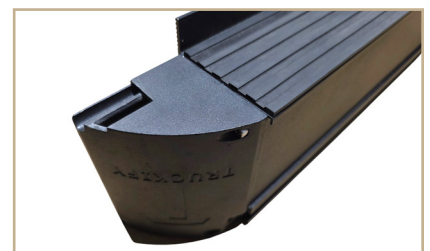
Next step is to screw on the front end caps. Grab the M00010 and M00011 end caps from your kit. The T-Slot in each end cap should look similar to the T-Slot of the aluminum. The M00010 goes on the drivers side, and the M00011 goes on the passenger side of the truck. To make it easier to tell which side is which, you can set the aluminum on top of your truck bed rails and then match the end caps to each side if needed. Using the #10 Self Drilling Screws 2-1/2" Long, screw and tighten (4) screws on each end cap, again make sure to use a standard drill and only lightly tighten them.



From your Weatherstripping Kit, grab the Side Member weatherstripping and a scissors. Flip both of your Side Members upside down, and apply the weatherstripping, starting at the front end caps (M00010 and M00011). Tear off the tape as you go and stick the weatherstripping to the bottom of the aluminum. Make sure you are keeping the weatherstripping closer to the outside edge of the Side Member.

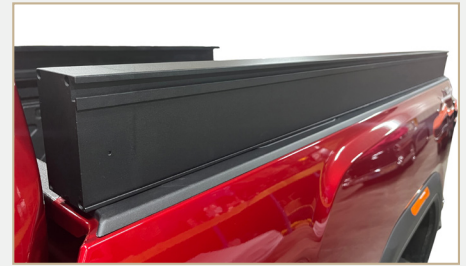


When you get to the rear end cap, trim the weatherstripping before the rear end cap starts as pictured. Repeat this on the other Side Member if you haven't already done so.



STEP 5

Set both of the Side Members on the bed rails of your truck. Then close the tailgate. The T-Slots in your Side Members should be facing outward.



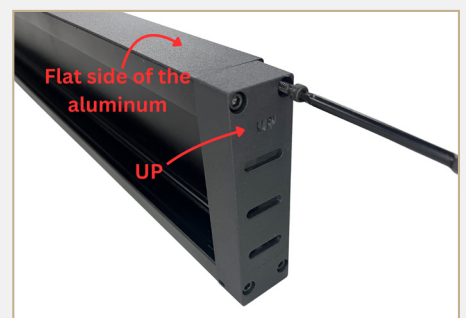
STEP 6

Next, grab a small level. Place the level on the outside of the aluminum, and make sure the level is sitting flat on the aluminum. Check to see if each Side Member is sitting level on the bed rails of your truck, or in other words, make sure the Side Members are not leaning one way or the other. A lot of truck bed rails on top are sloped, which cause the aluminum to lean and the Tail Member to not slide in and out nicely. If both of them are sitting level, you can move to the next step. If they are not sitting level, you will need to use the included weatherstripping shims. There are (2) different thicknesses included, choose one of them depending on how much it is out of level. Stick the weatherstripping shim on the bottom of the aluminum Side Member along the outside edge (the side that faces away from the truck bed) so that it brings it back to sitting level. Do this on both sides.



STEP 7

There are (2) pieces of aluminum in your kit that have this same profile as pictured below, a Tail Member and a Cab Member. On some kits, these pieces are equal in length, so it doesn't matter which is which. However, in other kits, these are different in length. The Cab Member goes at the front of your bed near the cab, and it is the longest in length. Find the one that is longest in length of the two, and grab that one and set it on a table upright with the flat side up as pictured, that will be your Cab Member. Also, get (2) M00014 end caps from your kit. Pay attention to "UP" on the end caps, UP should be near the flat side of the aluminum. Using a standard drill, screw each end cap on and lightly tighten with (4) #10 Self Drilling Screws 2-1/2" Long. Repeat this on the other side of the Cab Member.



STEP 8

Grab the Tail Member, which is the last aluminum member in your kit. Set it on the top of the tailgate so that the inside of the aluminum is flush to the inside of the tailgate. Make sure the flat side is facing up and the T-Track in the aluminum is facing down. Then move the Side Members so the rear end caps are flush to the rear of the aluminum. Double check that each Side Member is pushed outward against the inside of the bed rails, then, center the Tail Member between the two Side Members by eyeing it up.



STEP 9

Grab both of your M00015 end caps, and slide them on to each M00016 T-Rail as pictured.



STEP 10

Unpackage the M10110 Shim Kit, and grab (2) of the 2nd thinnest shims (1/8" Thick). Place each 1/8" Shim temporarily between the end caps on each side. This will give you an 1/8" gap on both sides so that the Tail Member slides in and out of the T-Rails easily, and so that you know the thickness of your Final Shims. With the 1/8" Shim in place and the Tail Member aluminum centered, take the shims from your kit and fill the gaps on both sides with Final Shims that fit snugly in. You can use a combination of shims if needed to fill the gap snugly.



STEP 11

After finding the correct Final Shims, grab the Tail Member, Final Shims, M00015 end caps, and the threaded indexing pins from the Pin Kit, and set them on a table. Also, get the Tail Member weatherstripping from your kit, which has a “T” profile.

Retract both of the indexing plungers. Pull the knob and twist to set them in the retracted position.

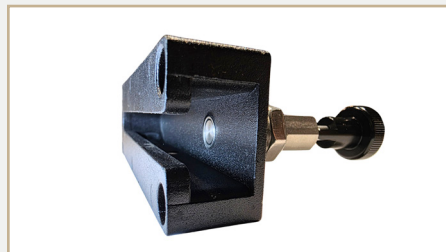
Before



After



Thread the index plungers into the M00015 end caps until the end of the plungers are flush with the inside of the end cap, as pictured.



Tighten the jam nut using (2) wrenches. Have one wrench holding the indexing plunger, while the other wrench is tightening the jam nut. Make sure the indexing plunger does not spin while tightening the jam nut. Do not overtighten the jam nut, it may cause the plunger to not work properly.



STEP 12

Flip the Tail Member aluminum so that the T-Track is facing up. Then, mix up some soapy water (Dawn Dish Soap and water works the best). Spray and fill the inside of the track with soapy water.



Slide the weatherstripping through the T-Track. Use a dry rag to pull it along. Pull it through so that it's roughly centered in the aluminum.



Set the Final Shim in place as pictured, and then screw on the M00015 end cap over the shim. Make sure to use a standard drill and lightly tighten using (4) #10 Self Drilling Screws 2-1/2" Long for each end cap. Repeat this process on the other side.

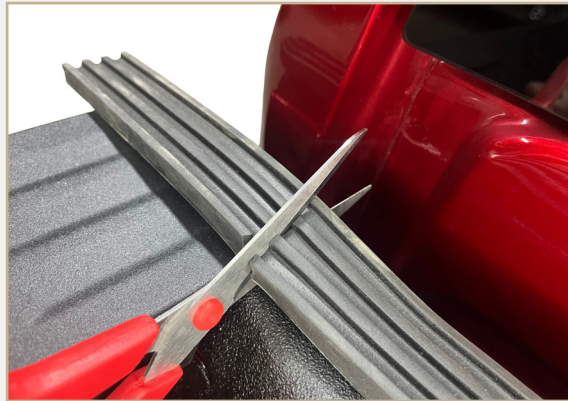


Trim the weatherstripping with a regular scissors as pictured, flush to the very end. Repeat this on the other side as well. You can also wipe off the excess soapy water with a rag.



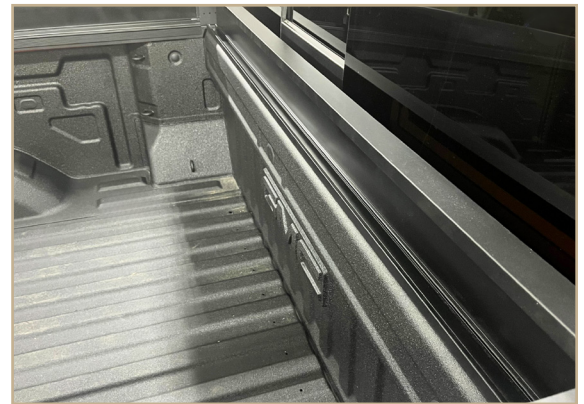
STEP 13

Grab the cab weatherstripping from your kit and a scissors. This weatherstripping will stick to the top of your truck bed bulkhead (Pictured Below) between the plastic bed caps. Start on one side and carefully peel off the paper backing and stick the weatherstripping on top, work your way to the other side and keep it centered as you go. Trim off the weatherstripping just before the plastic bed cap starts.

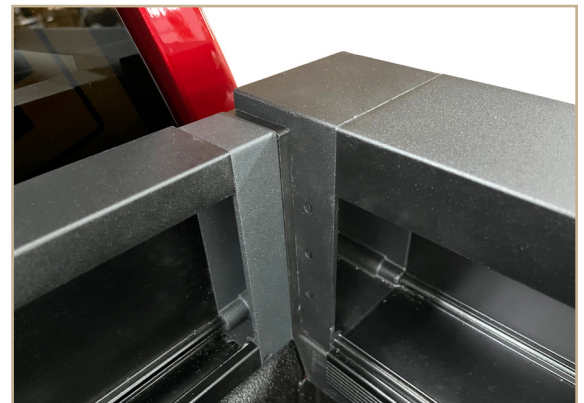


STEP 14

Grab your Cab Member and the rest of the Shim Kit. Set the Cab Member on top of the bulkhead by front of your bed as pictured. Center the Cab Member between your two Side Members.



Using shims, fill the gaps on both sides by temporarily setting the shims between the Cab Member and the Side Members. The shims should just be able to slip in, but they shouldn't be tight. The shims should have a little wiggle room. You do not want to have the shims tightly fit between the gaps, because this causes the Side Members to lean. You can use one shim or a combination of multiple shims. Make sure to shim both sides.

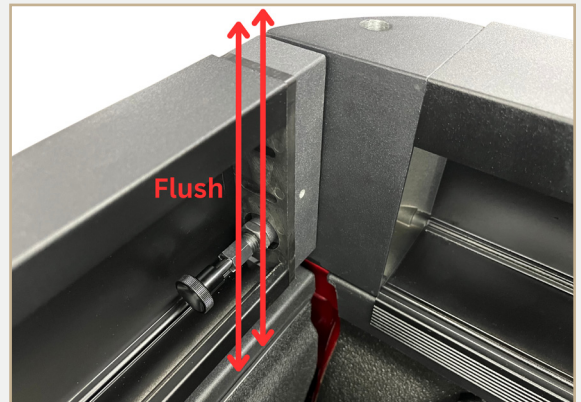


STEP 15

Now that you have chosen your shims, set the Cab Member and the shims in the truck bed for now. Open your tailgate, grab your Tail Member, slide it on the T-Rails, and retract the indexing plunger pins so the Tail Member is locked in place. Then you can close your tailgate.

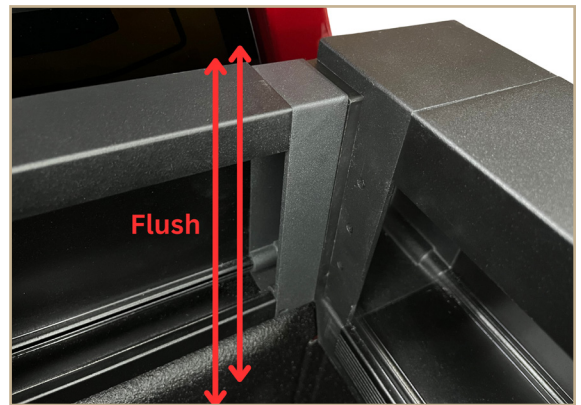


Get up in your truck bed or stand on the rear bumper over the Tail Member. Flush up the inside of your Tail Member to the inside of your tailgate (Pictured) by sliding each Side Member forward or backward. Make sure to do this on both sides.

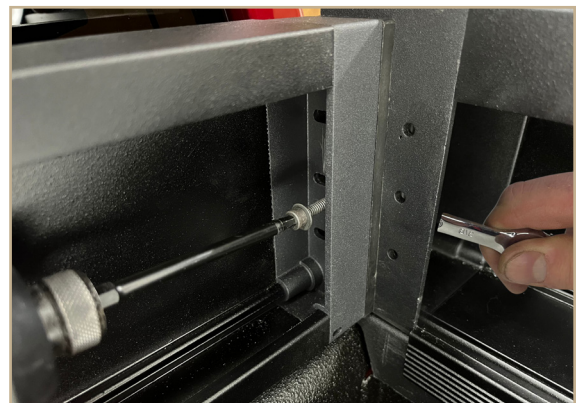


STEP 16

Now that your Tail Member is set where it is supposed to be, you can bolt on the Cab Member. Grab all of the #10-24 Bolts 2" Long, #10 Locknuts, and #10 Washers, and the Ball End Hex Driver Bit. Set the Cab Member and the shims you chose in place. The Cab Member should be flush or close to flush with the inside of your truck bed.



Bolt the Cab Member together using (3) bolts per side, using the holes that line up when your Cab Member is aligned. Make sure to use washers on both sides, and it does not matter which way the bolts go. Adjust the shims as you tighten so that they are squared up. Repeat this on the other side.



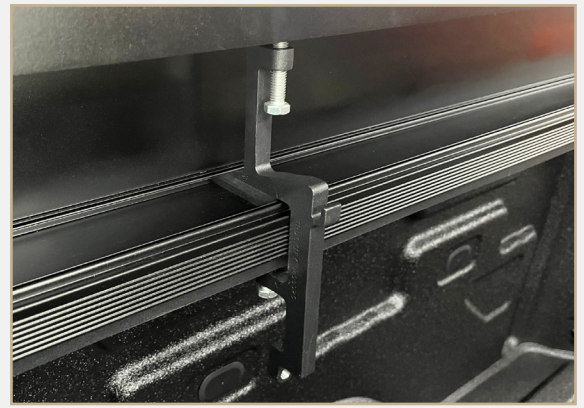
STEP 17

Double check that the Cab Member is flush with the front of your bed, and the Tail Member is flush with the inside of your tailgate. Now you are ready to clamp it down. Grab the clamps from the Clamp Kit, and start laying them on and spacing them apart in thirds roughly. Don't tighten them yet. Each side gets (3) clamps. The clamps will sit like this... (Pictured).

After you have your clamps set in place, grab the (1) Pinch Clamp from your kit. This clamp gets rid of the gaps in the plastic bed cap while tightening your final clamps, so that your bed cover will fit properly. Start at one of the clamps near the tailgate, and place the Pinch Clamp near the final clamp, and tighten the Pinch Clamp. Then, you can tighten the middle bolt on the final clamp with an impact driver or ratchet and socket. Repeat this process using the Pinch Clamp with just the final clamps in the rear and in the middle. You do not have to use the Pinch Clamp while tightening the final clamps in front near the cab. Finish tightening all the middle bolts in the clamps.

Next, in the Clamp Kit, there are extra bolts that are loosely packed, these bolts and swivel pucks are for the bottom bolts on the clamps. These bolts both level the Side Members and add strength. There are a couple of sizes, pick the bolt size that best fits your truck (The bolt should touch the side of the truck bed before bottoming out) Thread the bolt into the bottom threads on the clamp, and then snap the swivel puck end onto the end of the bolt, if it is too tight to snap on by hand, you can use a hammer to tap the puck on. Once the swivel puck is snapped on, you can thread the bolt until the puck touches the inside of the truck bed, then turn the bolt another $\frac{1}{4}$ turn in (This bolt shouldn't be tightened, it should only be turned $\frac{1}{4}$ turn after touching)

Next, thread the top bolt on the clamp in until the swivel puck end touches the aluminum, then, tighten the bolt a $\frac{1}{4}$ turn as well (This bolt also shouldn't be tightened, it should only be turned $\frac{1}{4}$ turn after touching). Repeat this on all clamps.



STEP 18

Finally, grab the ball lock pins from your Pin Kit, and insert them in the holes of the end caps by the tailgate. These pins are a safety precaution and keep accessories from falling off if they are not tightened.



Your truck bed raiser is now installed! The only thing left to do is mount your bed cover back on. Bed covers that mount with standard clamps (Pictured Below) will work excellent and require no modification. Bed covers that mount using features in the truck bed will need some modifications, such as a simple custom bracket or some self tapping metal screws.

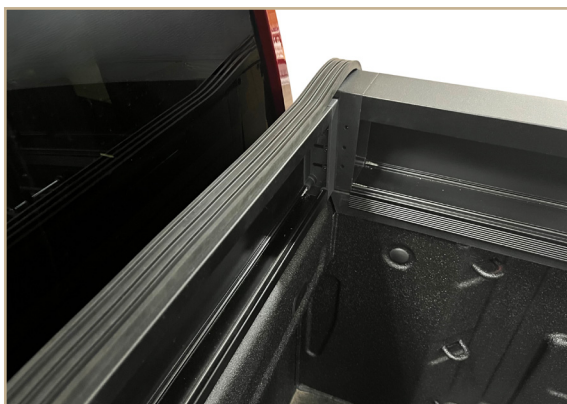


MOUNTING YOUR BED COVER

The bed cover should be mounted the same, if not, similar to the way it is mounted directly to your truck bed. Since each truck bed cover is different, please use the installation instructions for your specific cover. We designed the truck bed raiser to work with almost every bed cover, but some installations still need small modifications.

QUICK TIPS

- You should be able to reuse the clamps that came with your bed cover if they are standard clamps.
- If your bed cover mounts using features in the truck bed, some customization or additional mounts/ clamps might be needed.
- Extra weatherstripping for the front of your bed by the Cab Member is included with your kit. Check your bed cover for any big gaps near the cab of the truck. If needed, you can stick the weatherstripping to the top of your Cab Member, and trim to length.



- Most bed covers have (2) Side Rails that are mounted first, and then the cover mounts to the Side Rails. When clamping on each Side Rail, make sure that there is an 1/8" gap between the end of the Side Rail, and your Tail Member (Pictured). You can use a leftover 1/8" shim (2nd Thinnest Shim) from your Shim Kit to space it out.



QUICK FEATURES

Throughout your truck bed raiser, you will notice integrated threads, holes, T-slots, and tracks. These are for added accessories, check out our website at Truckify.com, to see all the accessories that work with your truck bed raiser, but here is a quick list of accessories that fit your truck bed raiser.

BED HANDLES

There are integrated holes in the rear end caps of your Truck Bed Raiser, that are designed for our Bed Handles. These make it easier to climb in your truck bed, and they slide in and out with the push of a button.



DECAL PANEL TRACK

Another built in feature is a track that accepts our Decal Panel Kits. These are predesigned plastic panels that slide into the track of your Truck Bed Raiser and bolt in. Change the look of your Truck Raiser, color match your panels, or add a custom company logo to your truck, all non permanent and quickly removed!



BUILT IN T-SLOT

Your Truck Bed Raiser has a built in T-Slot that is designed to fit with many Truckify accessories such as added tie down points, a rack system, and much more.



THE TAIL MEMBER

After lifting out your Tail Member, you can hang it using the built in tabs on the mounting clamps. When the Tail Member is set back in place, you can use the spring pins on both sides to lock or unlock the Tail Member for extra security.



FAQ

Bed cover is too wide and gets caught opening and closing it?

You may need to loosen the clamps on the Truck Bed Raiser, and use the Pinch Clamp from your kit to take out the gaps that the plastic bed caps have. (See Step 16). If you have a retractable cover, you might have to adjust the set screws in each Side Rail to get the Side Rails wider so the cover opens and closes better.

Side Member is flexing too much?

You may have to tighten the bolts on the clamp more, especially the top and the bottom bolts (See Step 17)

Side Members not level?

Some truck bed rails are not completely flat on top, which causes your Side Members to not sit level. After tightening all the clamps, stand behind the truck and make sure each Side Member is level. If it is out of level and leaning toward the inside of your truck bed, then you will need to adjust the bottom bolts of each clamp. To bring it back to level, tighten the bottom bolts of each clamp. If your Side Member is leaning toward the outside of the truck, grab the extra weatherstripping from your Weatherstripping Kit, and these will act as a shim that will level out your Side Member(s). First, take off the Side Member, flip it upside down, and pick the thickness of weatherstripping shim that will level it out, and stick it on the very outside of the Side Member as pictured (Closest to the outside of the truck), then reinstall. To level the Side Member, you may have to try a different weatherstripping shim or adjust the bottom bolts of your Truck Bed Raiser clamps to pull it level.



Bed cover not latching closed?

You may have to loosen the mounting clamps for your bed cover and mount the bed cover side rails higher. A bed cover not latching properly is usually due to the bed cover side rails being mounted too low.

Warning and Safety Instructions

- Driving with loose bolts or fasteners could lead to serious injury of people and damage to equipment
- Failure to follow proper installation instructions could lead to serious injury of people and damage to equipment
- Improper reinstallation of your bed cover may be unsafe for driving
- Always lock both indexing pins in your Tail Member when driving with the Tail Member in place, and always install the ball lock pins while driving with accessories installed on the Truck Bed Raiser

Returns

All returned products must have prior authorization from Truckify before they are shipped back to our facility. Returned products without pre-authorization are not eligible for credit. There will be a 20% restock fee on returned items. Products must be returned within 60 days of the date of sale to be eligible for credit. To request a return, go to our website, Truckify.com, under returns, to submit a return.

Warranty

This product comes with a limited one year warranty. Products manufactured by Truckify are warranted to be free of defects due to faulty material or workmanship for 12 months from the date of purchase. Normal wear and tear is not considered a defect in material or workmanship. Liability under this warranty is limited to the replacement of the defective part provided that the following conditions are met:

- Truckify is promptly notified in writing of such defect immediately upon discovery, and the defective product is returned for inspection
- The defect is not due, without limitation, to faulty installation, misalignment of the product, vibration, pressure pulsations, ordinary wear and tear, corrosion, ultraviolet degradation, operation outside the product specified limits and using the product for uses other than its intended use



877-885-4994

Truckify.com

support@truckify.com

9479 County Road E,
Arpin, WI 54410



